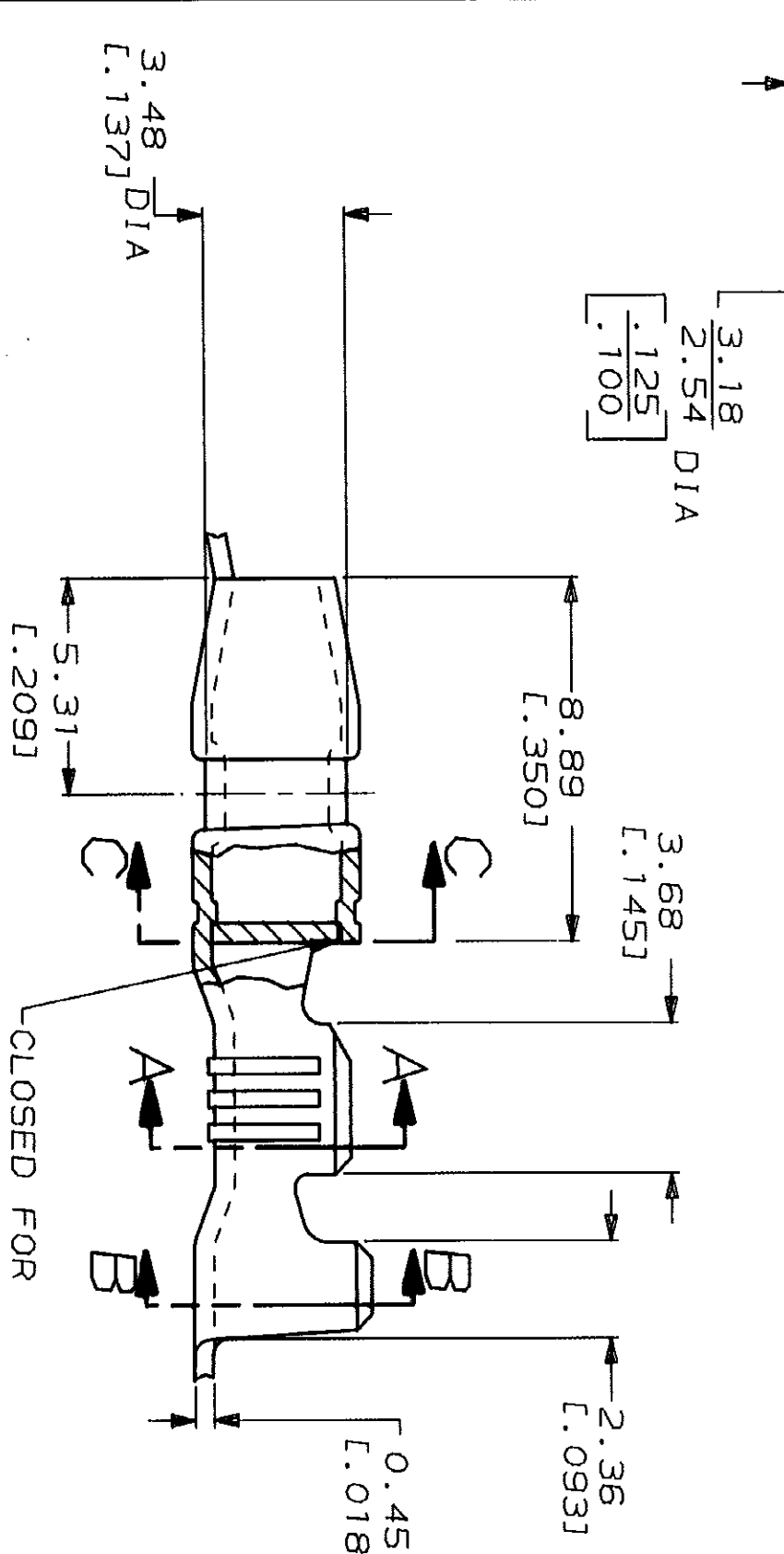
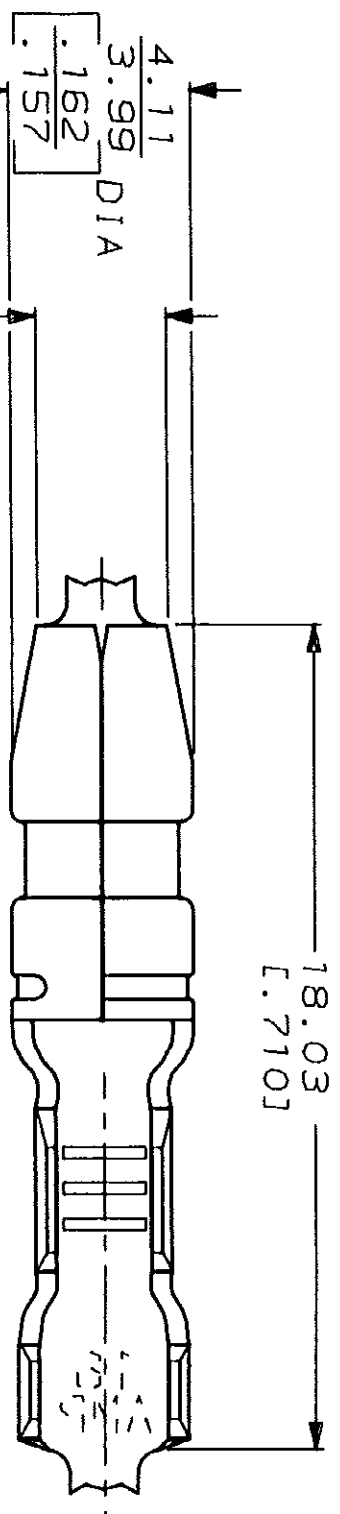


THIS DRAWING IS UNPUBLISHED. RELEASED FOR PUBLICATION BY AMP INCORPORATED. ALL INTERNATIONAL RIGHTS RESERVED. © COPYRIGHT 19

LOC	DIST	F	ZONE	LTR	DESCRIPTION	DATE	APPD
AF	50			H	REDRAWN PER AF-6810	7/26/90	PF/JR

REVOLUTIONS		DATE	APPD
		7/26/90	PF/JR



CLOSED FOR MOLDING PURPOSES

SECTION A-A
SCALE 10:1

SECTION B-B
SCALE 10:1

SECTION C-C

1 CONTINUOUS STRIP ON REELS

METRIC

TYPE	WIDTH	STRIP LENGTH	TYPE	WIDTH	WIRE
INSUL BARREL CRIMP	3.56 [140]	5.33 [210]	F	2.29 [090]	WIRE BARREL CRIMP
F or 0					

DO NOT SCALE PRINT. UNLESS SPECIFIED DIMENSIONS IN MILLIMETERS (INCHES) TOLERANCES ON:	DR	7/26/90	P FORNEY	AMP	AMP Incorporated
1.50 [059]	CHK	7/26/90	JR RUTH	NAME	Harrisburg, PA 17105-3608
2 PLC DEC ± 0.25 [1.010]	APPD	7/26/90	G VETTER	SHUR PLUG, 3.96 [1.156] DIA	
3 PLC DEC ± 0.25 [1.010]	APPD	7/26/90	R KUZO	SIZE	B
ANGLES ±	PRODUCT SPEC			CAGE CODE	00779
MATERIAL				DRAWING NO	61388
#1 HARD BRASS				SCALE	6:1
FINISH	APPLICATION SPEC			SHEET	1 OF 1
0.003302 [1.000130]					
MAX PRE-TIN PL					
PER MIL-T-10727					

AMP 1470-15 REV 11-89 30 JUL 1990 09:57:37 AMP17795 4512840E7121240M2124U 5NA-RUS CUSTOMER DRAWING